



22190 Cliff Ave.

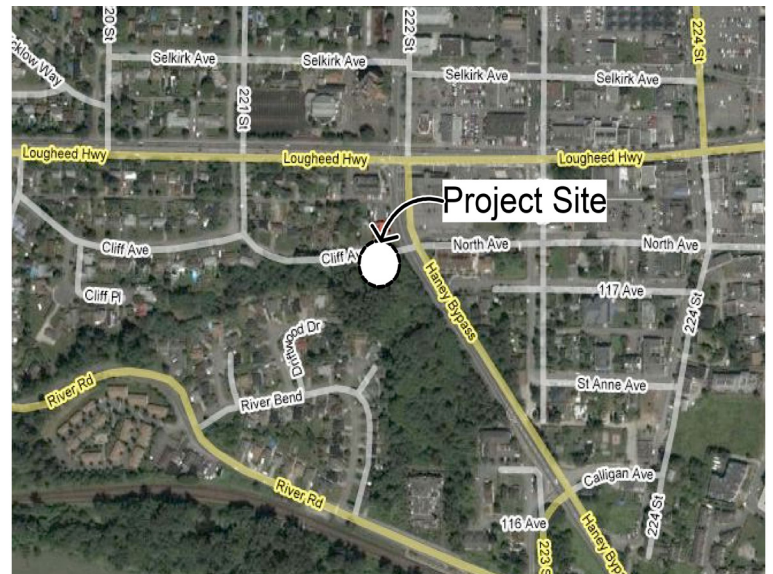
Maple Ridge, BC

Property Highlights

This is an excellent development site, located close to the Maple Ridge town core, near transit and Lougheed Hwy. It is walking distance to the West Coast express and shopping.

Residential development is approved for 27 residential units, with the possible development of commercial units on the ground floor. Development permits have been submitted with the city.

Offered At: \$849,000



Michael Marckwort

+1 604 691 6638

michael@naicommercial.ca

For Sale
22190 Cliff Ave
Maple Ridge, BC



Property Description

- Lot Size; .6 Acres, 26,136 sq. ft.
- Current zoning C 3
- Residential development approved for 27 residential units, with the possible commercial development on the ground floor

Development Plans & Documentation:

- Full Architectural Plans / Design, Geotechnical reports/ investigation, Geotechnical Peer Review and Engineering plans have been completed
- These documents will be included in the sale of the property
- Geotechnical reports are required by the city

