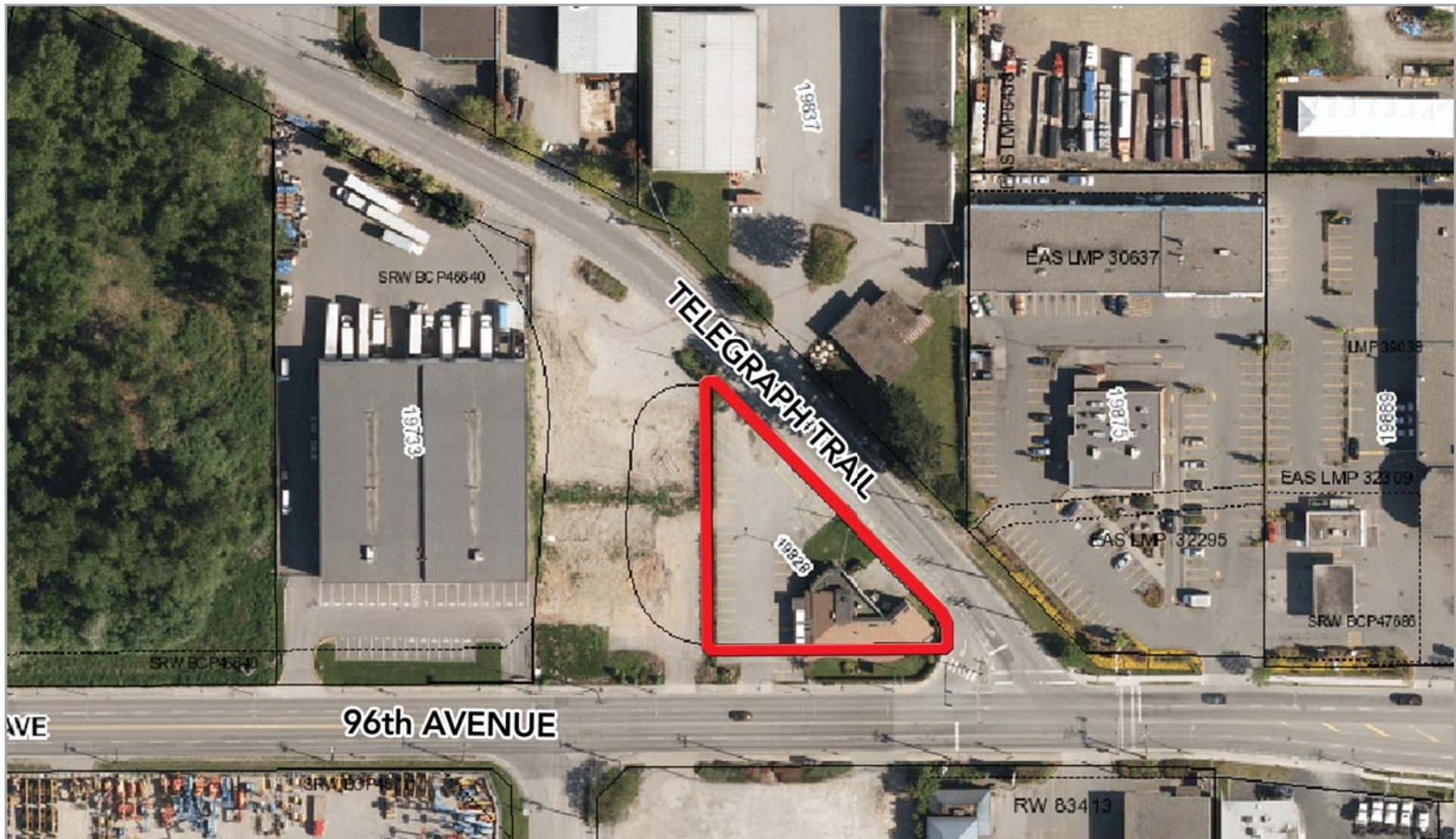


# FOR SALE

0.457 Acre Corner Lot  
Port Kells/Northwest Langley Industrial Area



19828 Telegraph Trail, Langley, BC

## LOCATION

The subject property is located at the corner of 96th Avenue and Telegraph Trail, north of the Trans Canada Highway/200th Street intersection in the Port Kells/Northwest Langley Industrial area. This area is one of the fastest growing industrial areas in the Metro Vancouver area, and offers excellent access directly to the Trans Canada Highway via either 200th or 176th Streets, and easy access to all municipalities in Greater Vancouver. This fully-serviced area is close to Langley and Guildford labour supplies and has zoning which allows light, medium and heavy industrial uses.

**William N. Hobbs\***  
**W.N. (Bill) Hobbs B.Comm, R.I. (BC)**  
Senior Vice President - Industrial  
604.640.5808  
bill.hobbs@ca.cushwake.com  
*\*Personal Real Estate Corporation*

 **CUSHMAN & WAKEFIELD®**  
Global Real Estate Solutions<sup>SM</sup>

