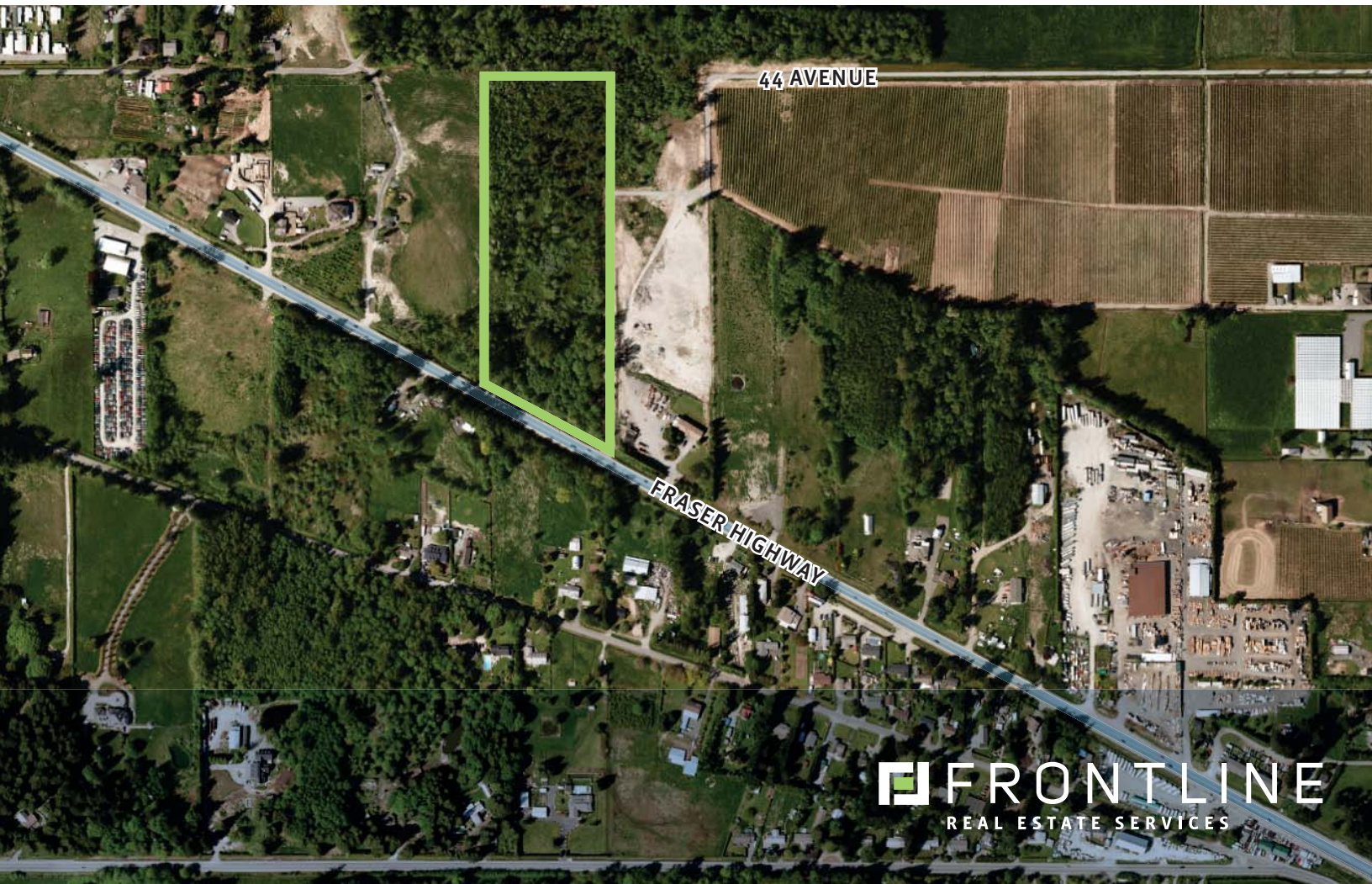


# FOR SALE

DEVELOPMENT / INVESTMENT OPPORTUNITY

23591 Fraser Highway  
Langley, BC



LOCAL FOCUS. POWERFUL RESULTS.

## PROPERTY HIGHLIGHTS:

- 10.15 acres (442,134 sf lot)
- 118' of frontage on Fraser Highway
- Asking price \$1,900,000

*For more information*  
PLEASE CONTACT:

Joshua Turner  
Personal Real Estate Corporation  
d 604.668.5993  
c 604.916.0917  
josh@FLRE.ca

[www.FLRE.ca](http://www.FLRE.ca)

# FOR SALE

DEVELOPMENT / INVESTMENT OPPORTUNITY

23591 Fraser Highway  
Langley, BC

## OPPORTUNITY

The opportunity is to purchase a high exposure development or investment property located on Fraser Highway between 232 Street and 240 Street in the Township of Langley.

## PROPERTY FEATURES

- High exposure to Fraser Highway
- Zoned RU-1 (Min 1.7 HA Rural)

## PROPERTY SIZE

10.15 acres (442,134 sf)

## LEGAL DESCRIPTION

Parcel "D" (P47586E) Lot 7 Section 33 Township 10  
New Westminster District Plan 1553 PID: 006-713-955

## GROSS PROPERTY TAXES

\$3,484.87

## ASKING PRICE

\$1,900,000



E.&O.E: This document/email has been prepared by Frontline Real Estate Services Ltd. for advertising and general information only. The information contained herein was obtained from sources which we deem reliable and, while thought to be correct, is not guaranteed by Frontline Real Estate Services Ltd. Any interested party should undertake their own inquiries as to the accuracy of the information. Frontline Real Estate Services Ltd. excludes unequivocally all inferred or implied terms, conditions and warranties arising out of this document and excludes all liability for loss and damages arising there from.