

AGRICULTURAL LAND
5222 180TH STREET
SURREY, BC



APPROX. 13.706 ACRES LOCATED IN THE
CLOVERDALE NEIGHBORHOOD OF SURREY

FOR SALE



RON EMERSON
SALES ASSOCIATE, INDUSTRIAL
604.608.5921
ron.emerson@ca.cushwake.com

BART VANSTAALDUINEN*
VICE PRESIDENT,
INDUSTRIAL & INVESTMENT
604.640.5871
bart.vanstaalduinen@ca.cushwake.com
** Personal Real Estate Corporation*

5222 180TH STREET, SURREY, BC

Approx. 13.706 Acres located in the Cloverdale Neighborhood of Surrey

FOR
SALE

LOCATION

The subject property is located in the Agricultural Land Reserve in the Cloverdale area in Surrey, British Columbia. This property is situated on west side of 184th Street, immediately southwest of the Cloverdale Industrial Park.

SIZE

13.706 Acres

ZONING

A-1 Agricultural Land District

Located in the Agricultural Land Reserve

PERMITTED USES

Based on the zoning of the property the following uses are permitted.

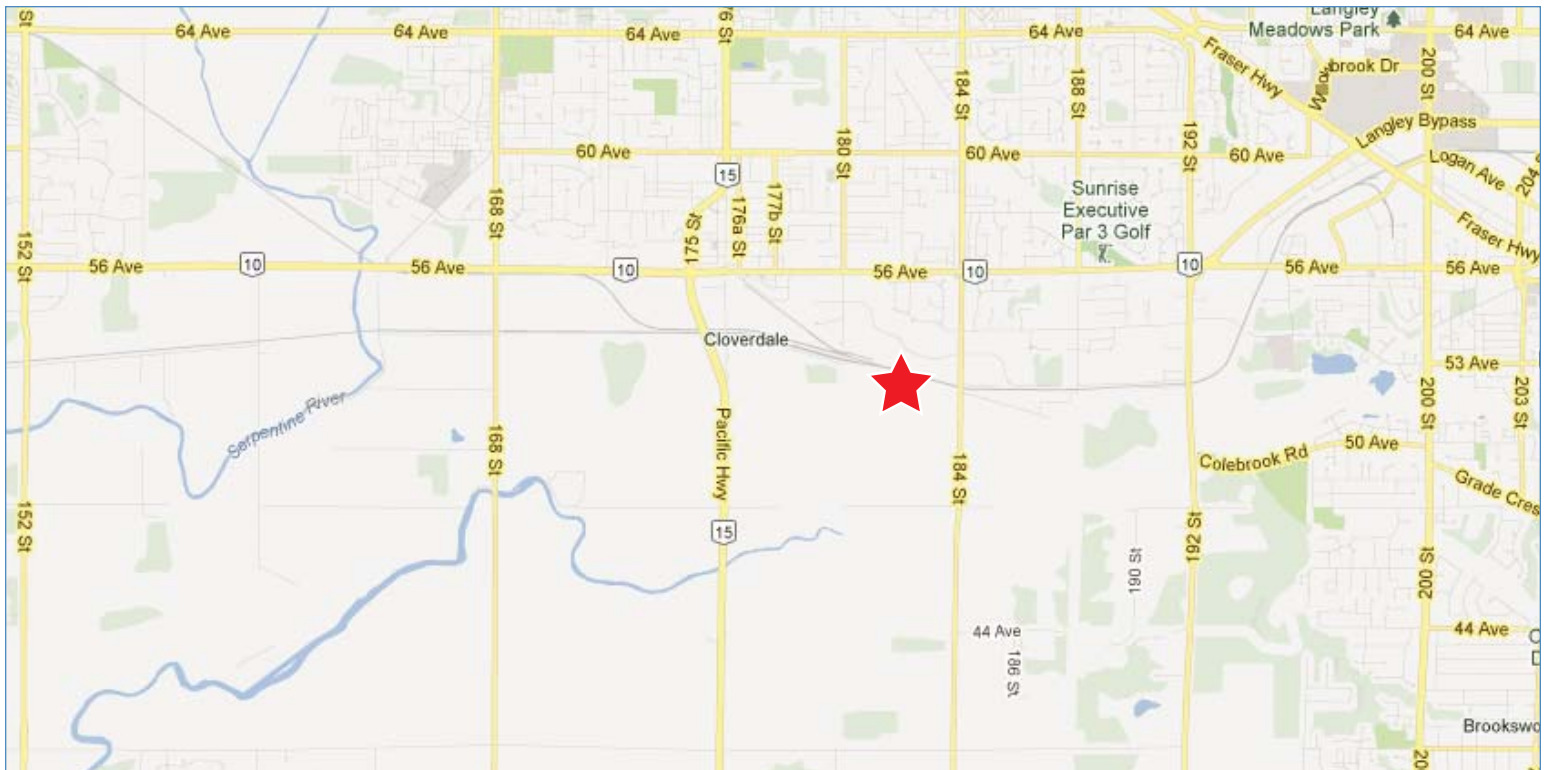
- Bed & Breakfast, Home stay
- Single Family Dwelling
- Manufactured (mobile) home, Class A or B
- Small scale agriculture
- Agriculture intensive
- Home occupation

CURRENT STATUS

Vacant

ASKING PRICE

\$1,027,950



RON EMERSON

SALES ASSOCIATE, INDUSTRIAL
604.608.5921
ron.emerson@ca.cushwake.com

BART VANSTAALDUINEN*

VICE PRESIDENT,
INDUSTRIAL & INVESTMENT
604.640.5871
bart.vanstaalduin@ca.cushwake.com

* Personal Real Estate Corporation

